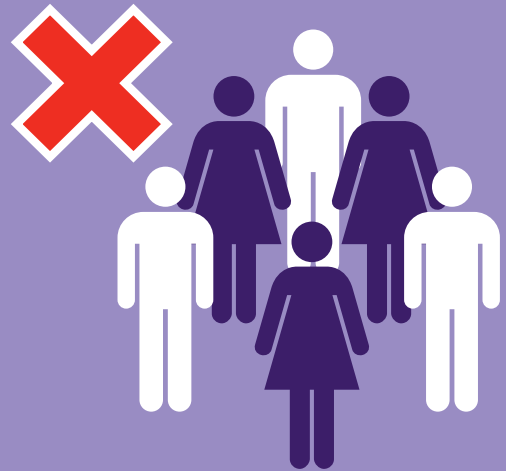


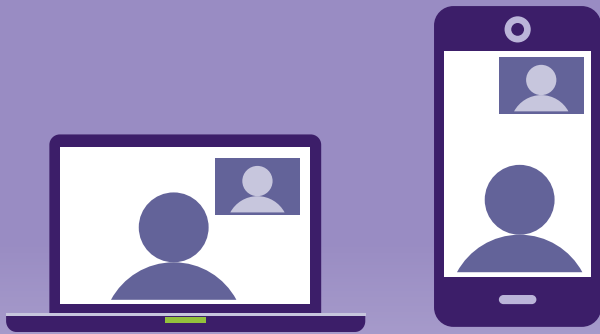
Help us stop the spread of infection



Only use lifts when no-one else is using them



Avoid congregating in communal areas



Keep in touch with vulnerable neighbours – by phone or internet



Keep at a safe distance of at least 2m (6ft 6 inches) from others

Please wash your hands regularly – especially after using doors and lifts



Help us save lives and protect the NHS by staying at home
Please follow the Government's guidance on staying at home and social distancing

www.sandwell.gov.uk/coronavirus

SANDWELL
is here to **HELP**